

# THE NEW CHILDREN'S MUSEUM

## VISIONARY PLAN

---

OFFICE RELOCATION AND FUTURE EXPANSION



Led by: James Brown

Student Participants: Alejandra Banuelos, Cherilyn Rodriguez, Elizabeth Dyball, Erick Nguyen, Favkkann Yam, Jailene Salas, Kassandra Keys, Lily Marino

# ART 545

## DESIGN STUDIO

ART 545 is an upper-division course for interior architecture students to gain experience doing real projects on campus and off campus.

### NEW CHILDREN'S MUSEUM VISIONARY PLAN

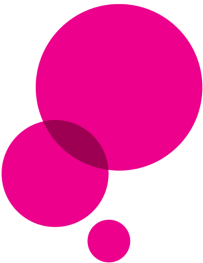
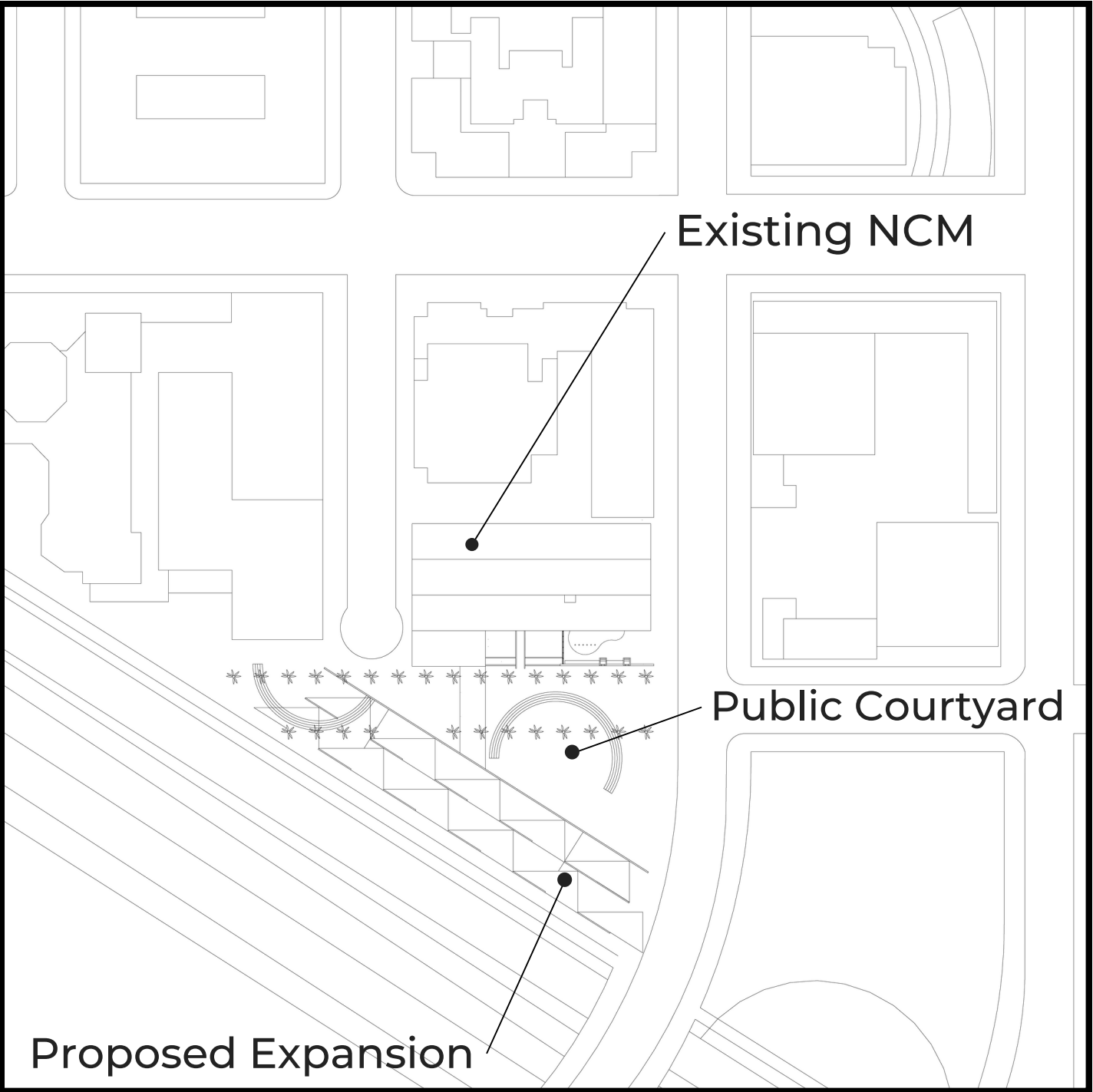
For this project we worked with The New Children's Museum, located in Downtown San Diego, to help meet their design needs. First, we will effectively relocate their office space and convert it into gallery space. We also propose a design for the museum expansion.



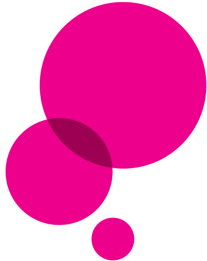
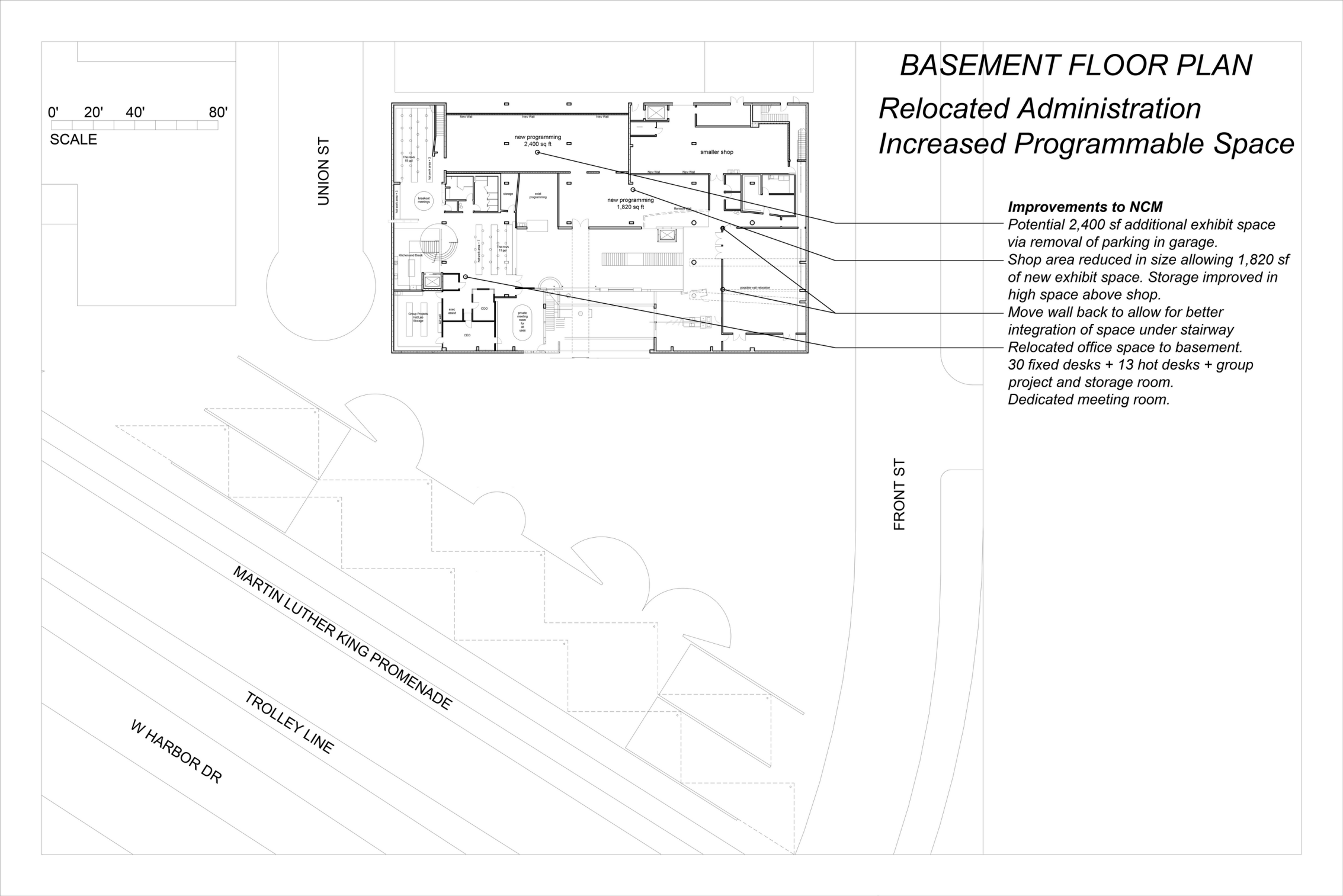
the new  
children's  
museum™

# SITE PLAN

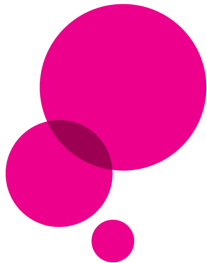
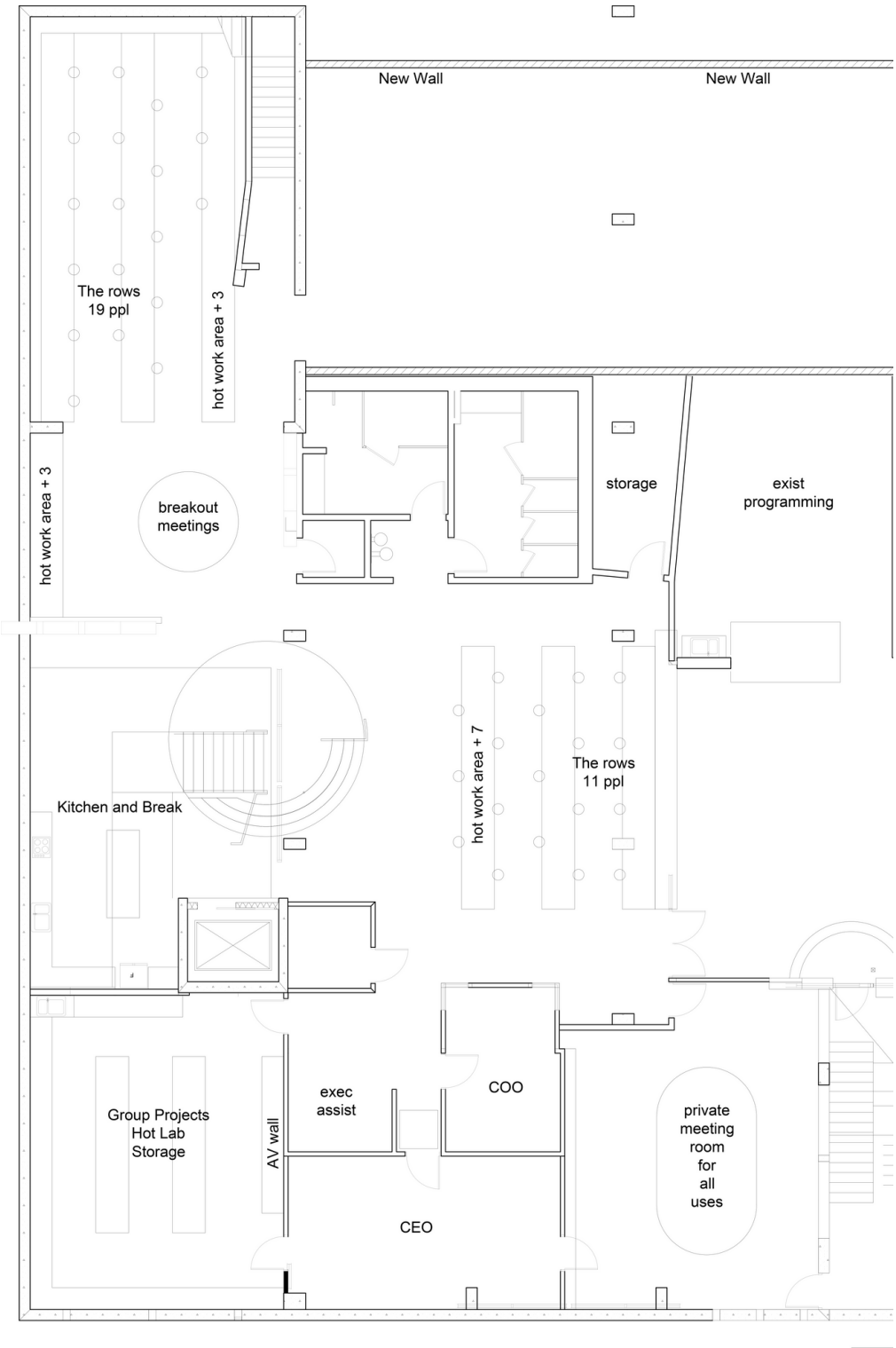
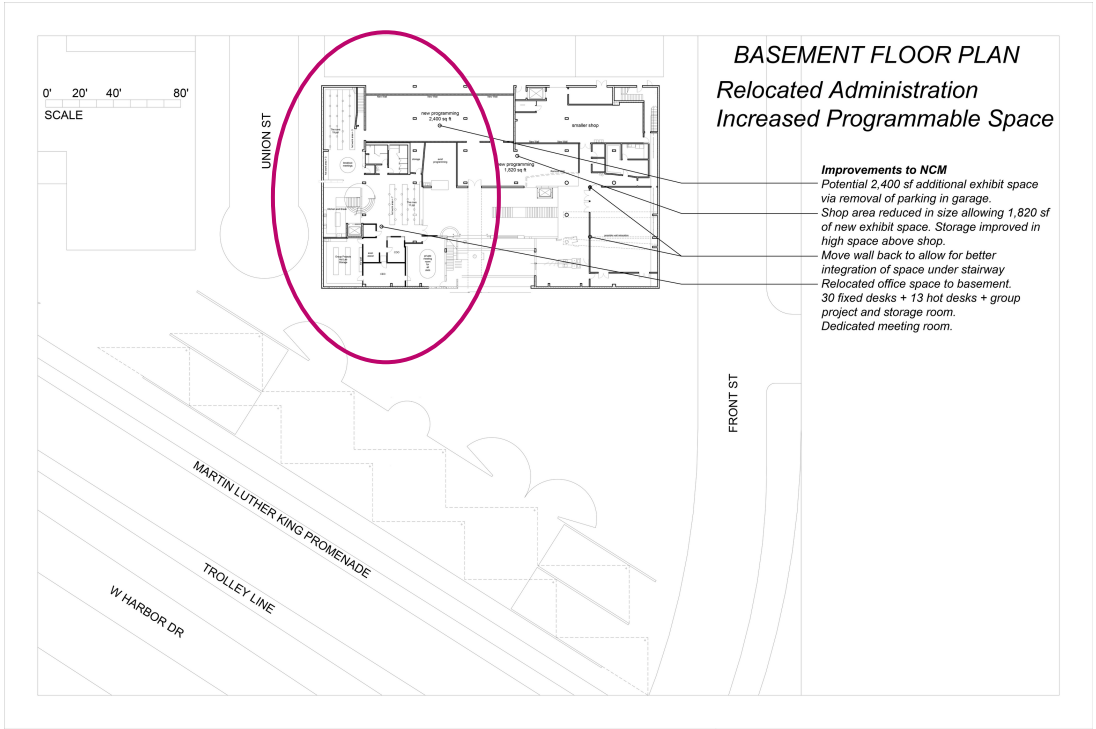
---



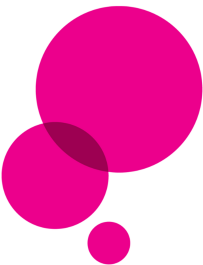
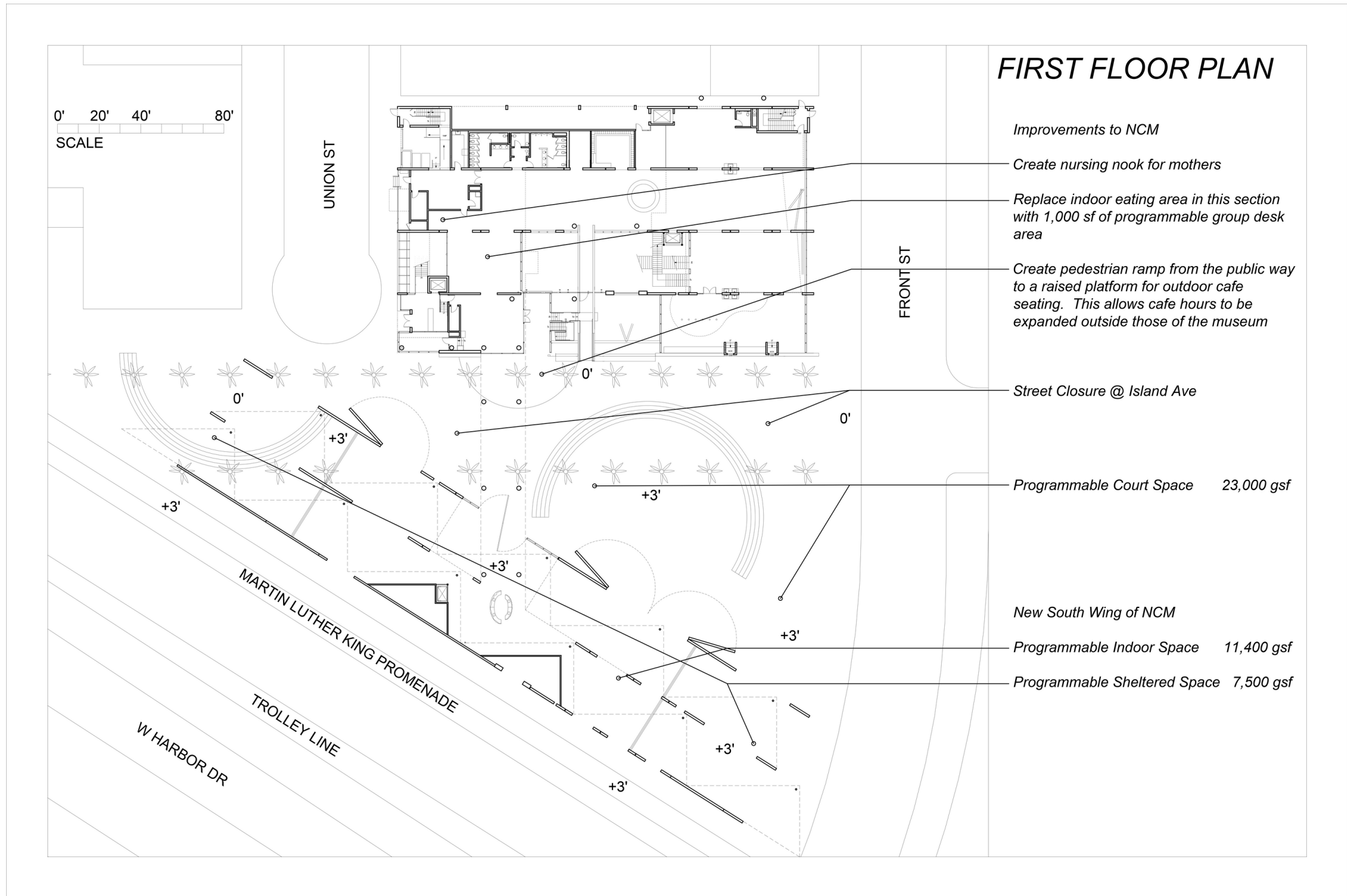
# FLOOR PLAN - BASEMENT



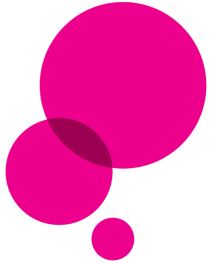
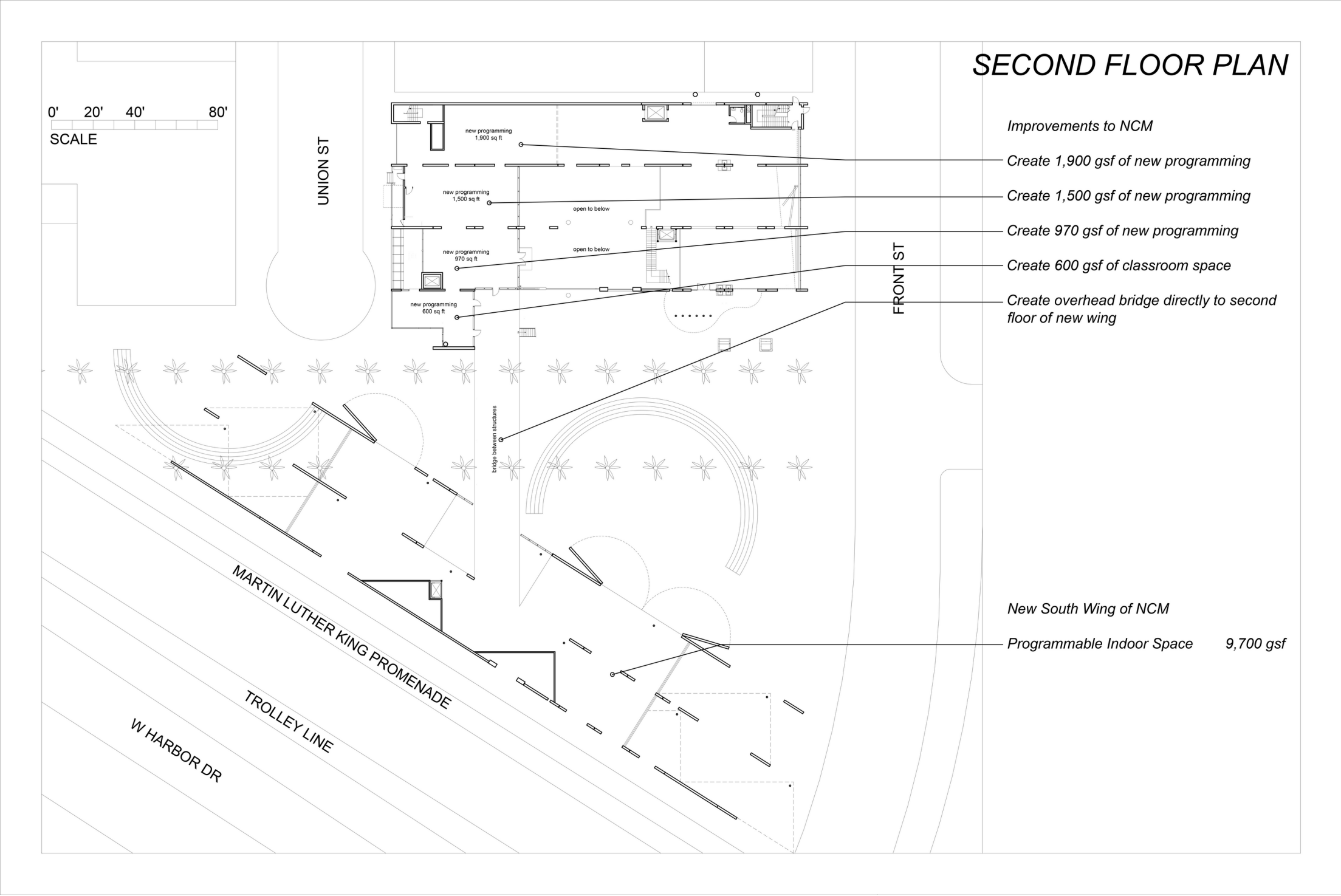
# FLOOR PLAN - BASEMENT



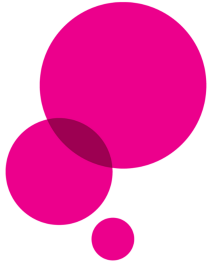
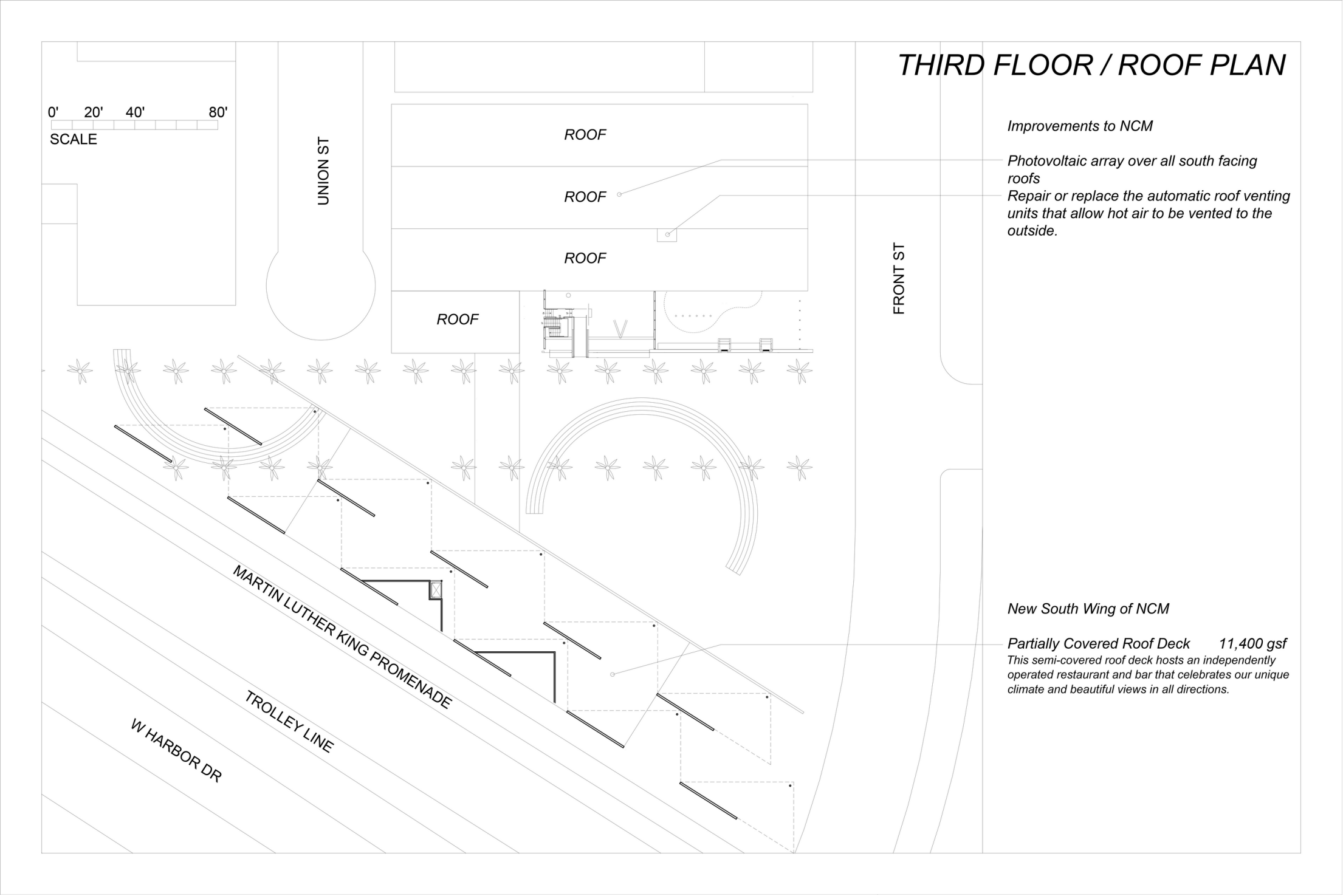
# FLOOR PLAN - FIRST FLOOR



# FLOOR PLAN - SECOND FLOOR

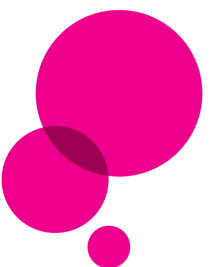


# FLOOR PLAN - THIRD FLOOR/ROOF



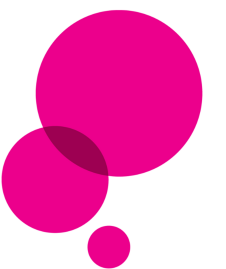
# NEW OFFICE PERSPECTIVES

---



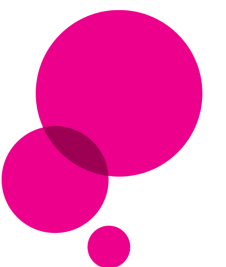
# NEW OFFICE PERSPECTIVES

---

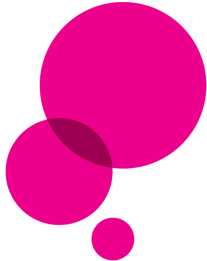
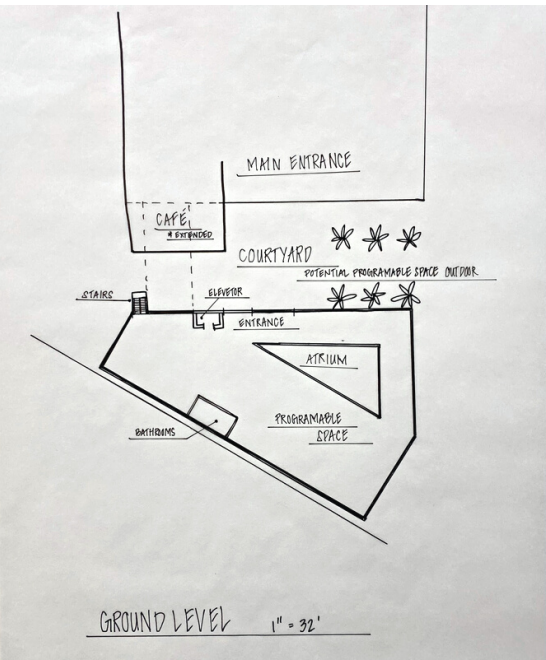
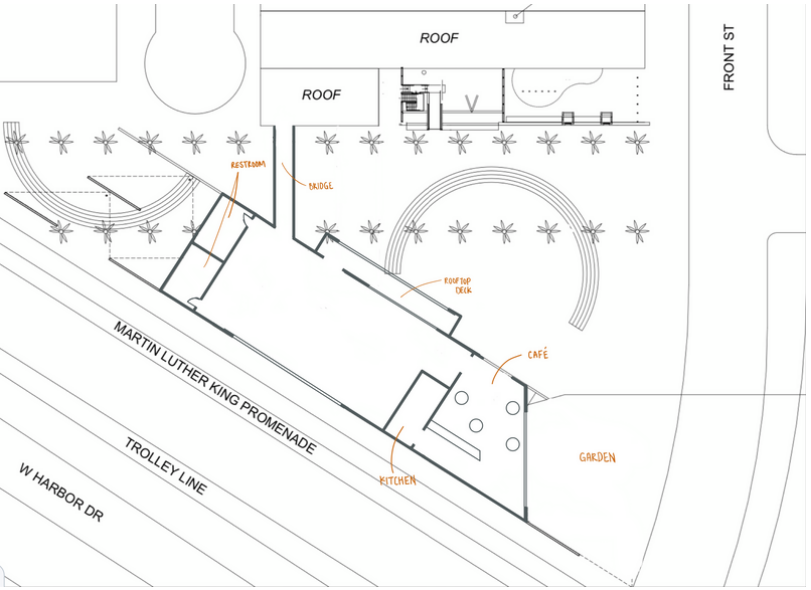
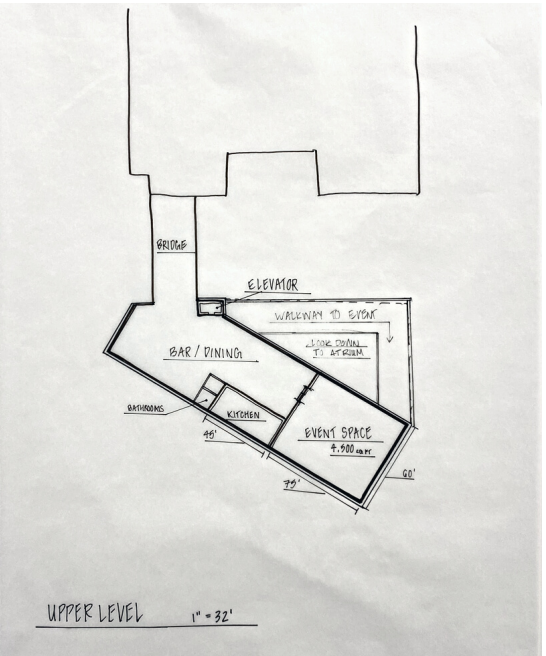
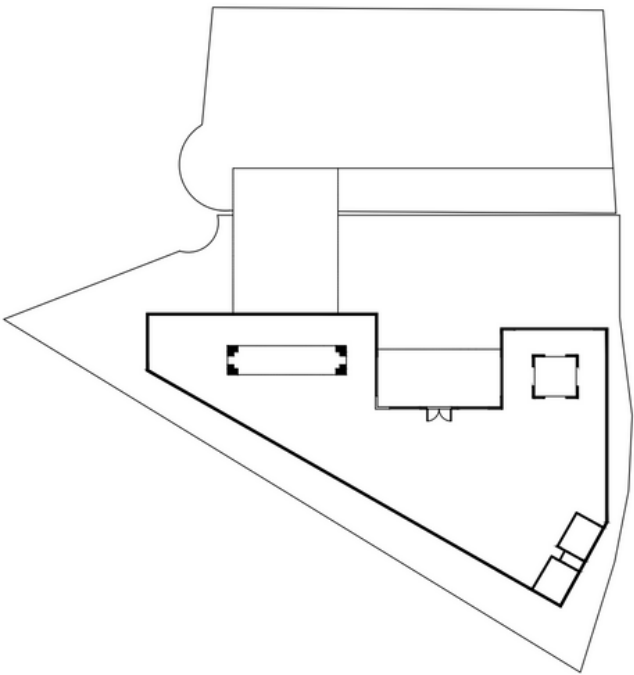
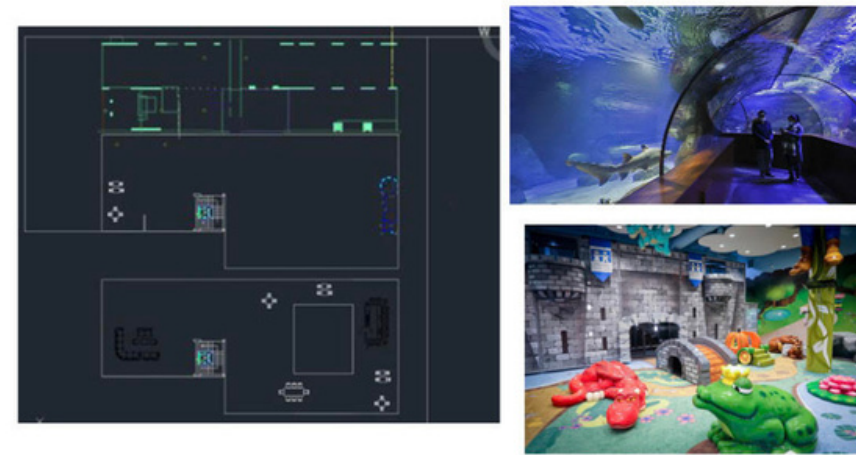


# NEW OFFICE PERSPECTIVES

---

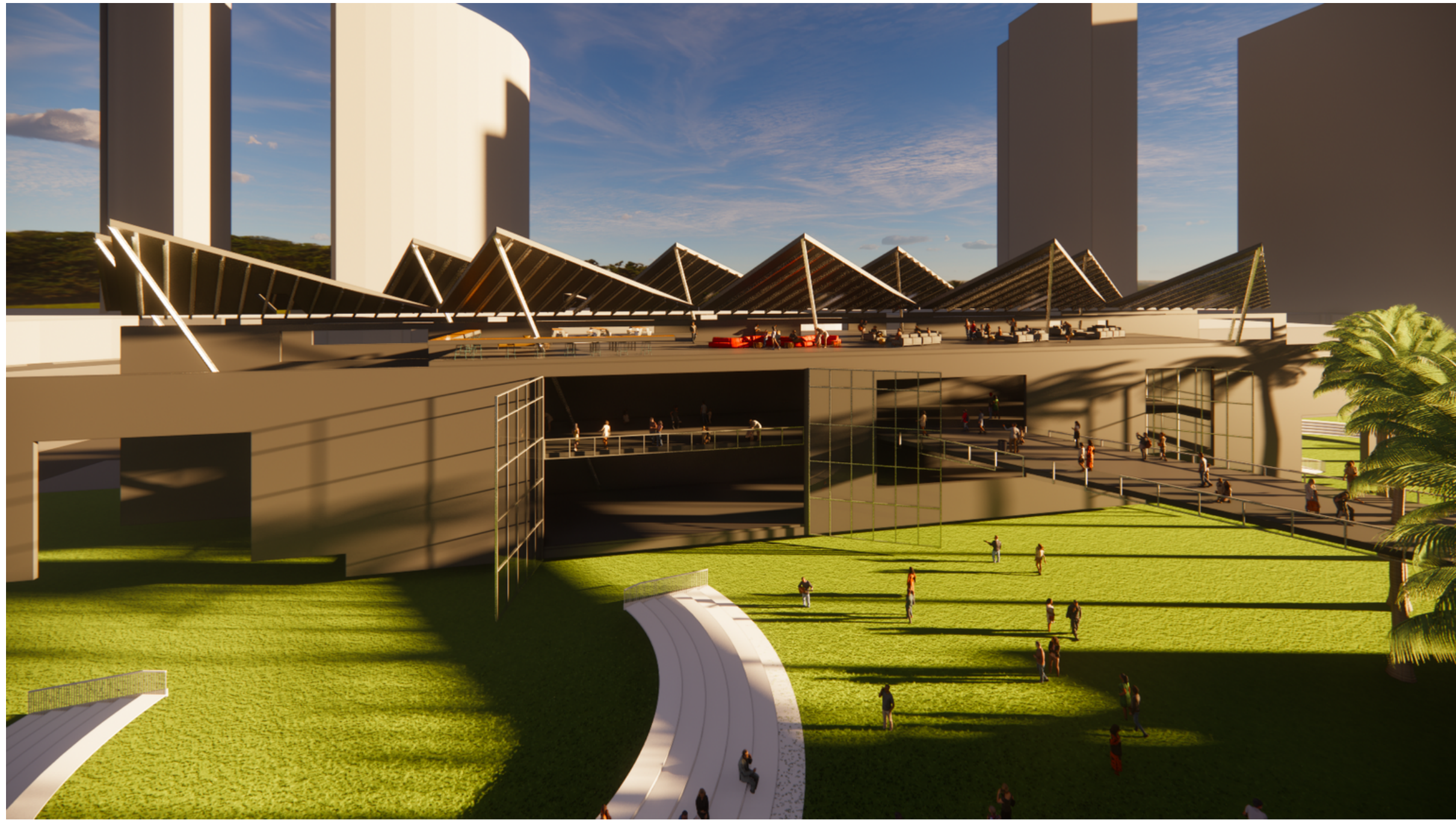


# NEW WING CONCEPTS



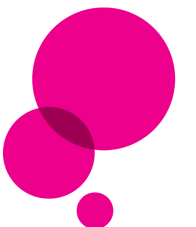
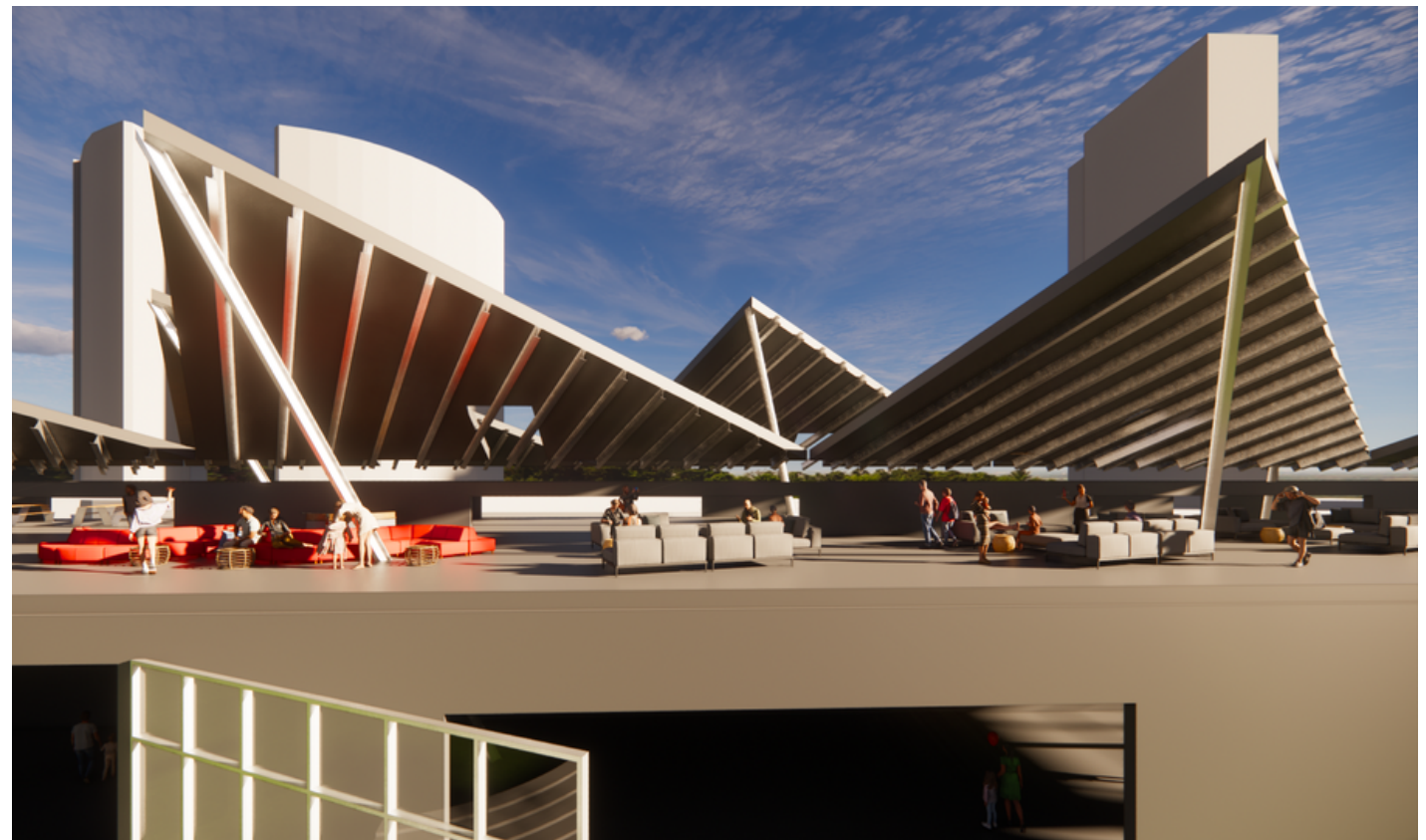
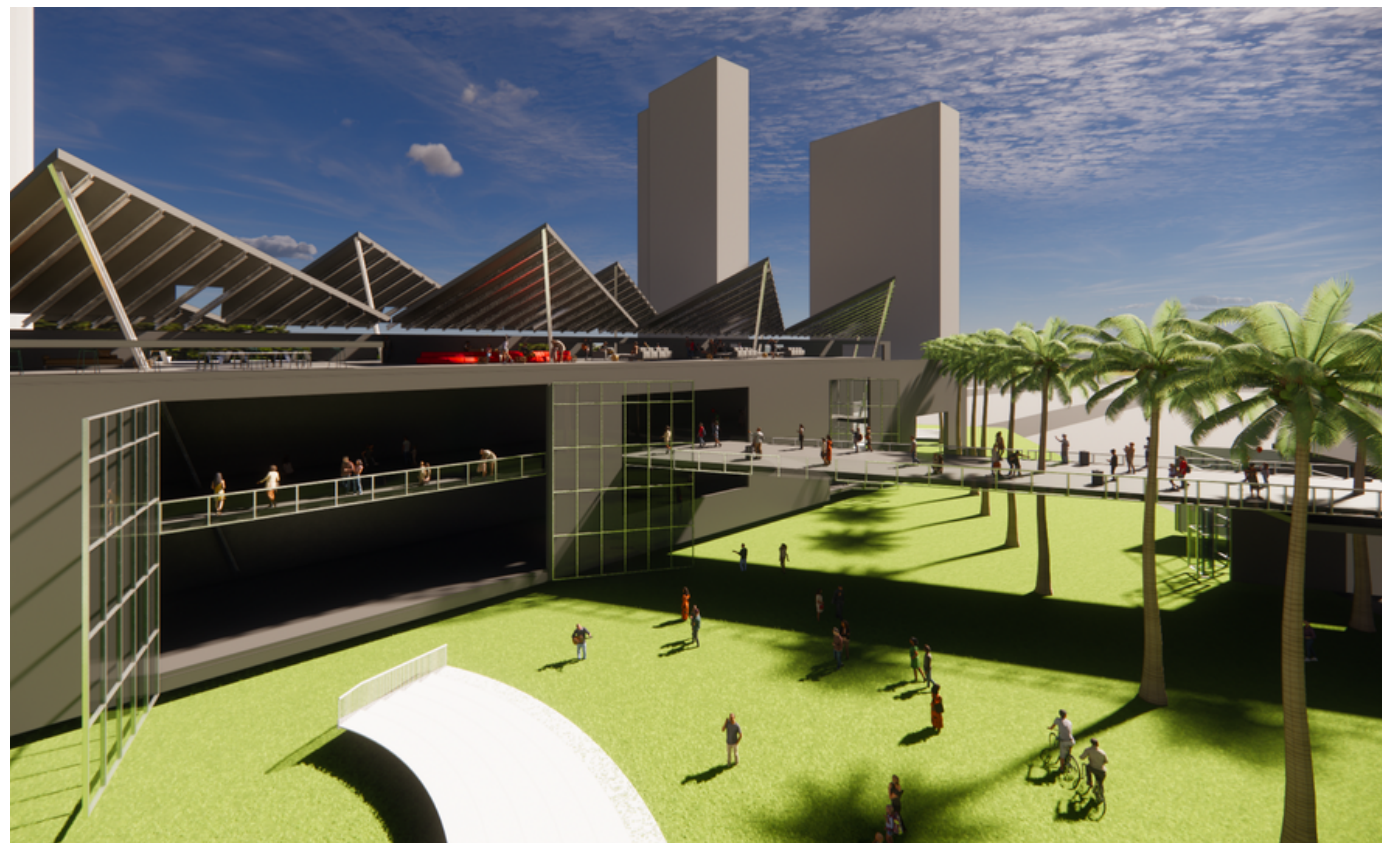
# NEW WING PERSPECTIVES

---



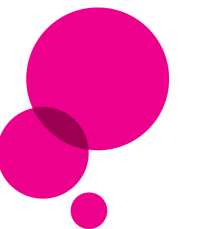
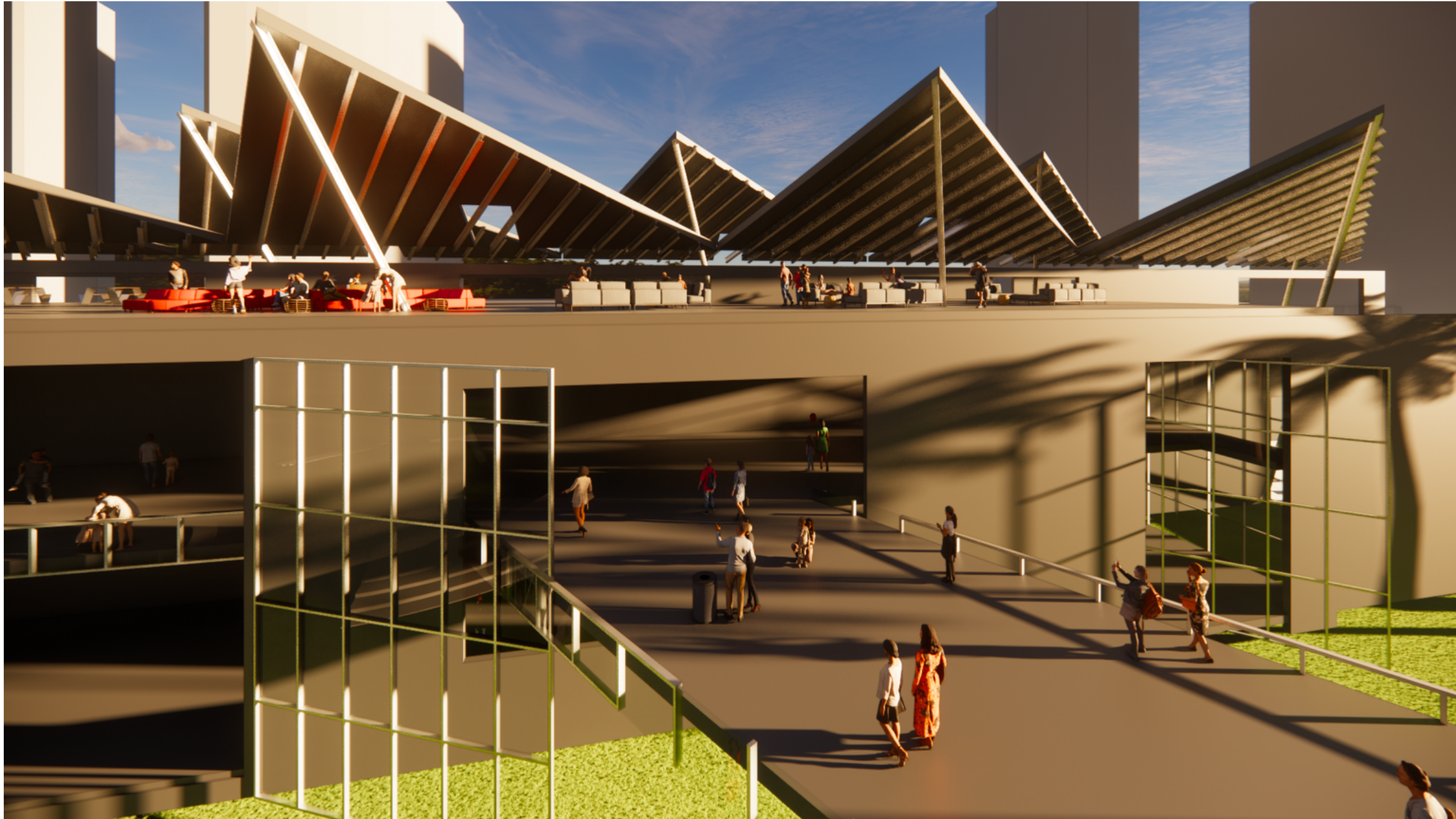
# NEW WING PERSPECTIVES

---



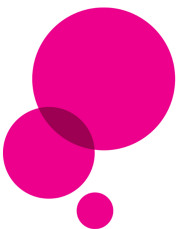
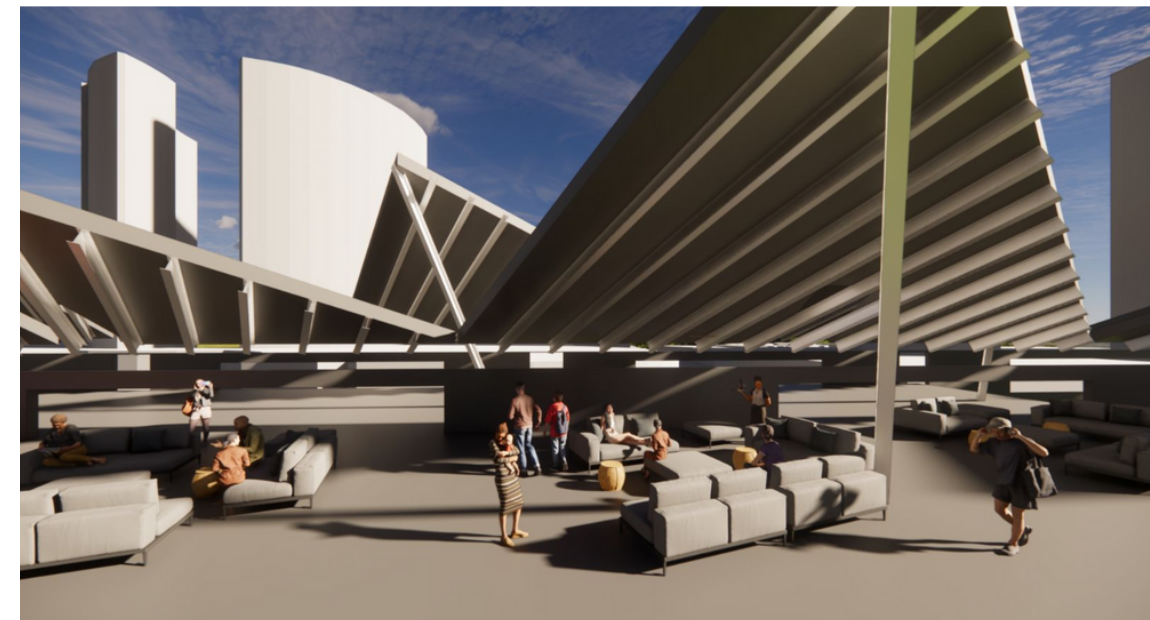
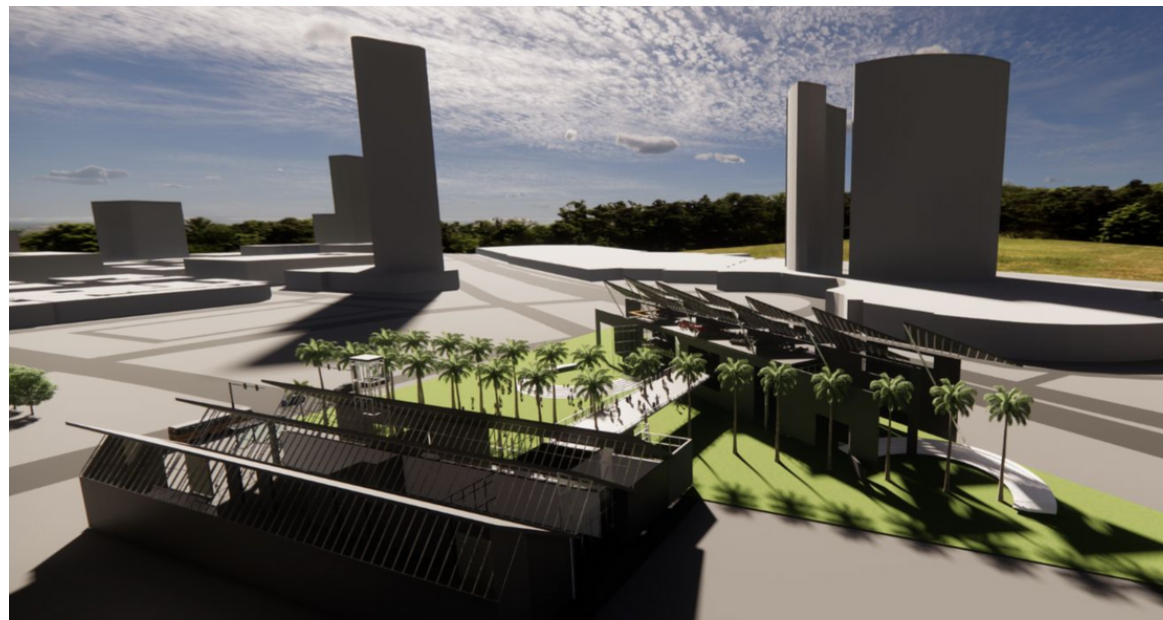
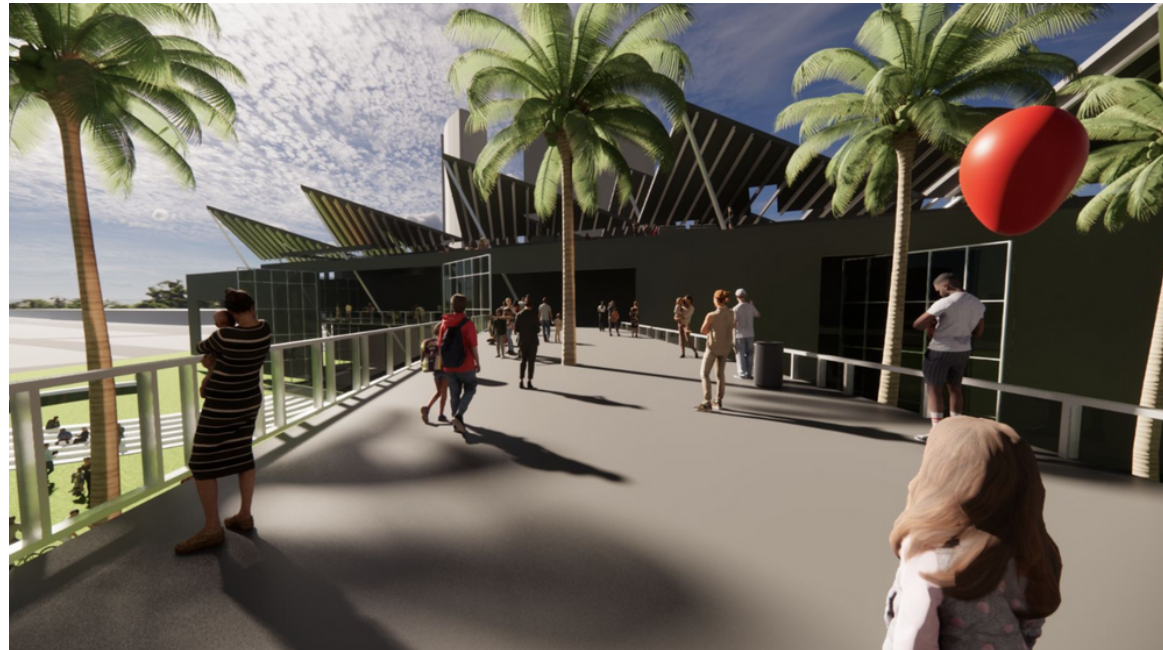
# NEW WING PERSPECTIVES

---



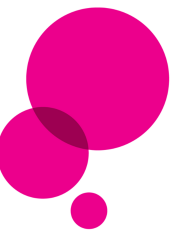
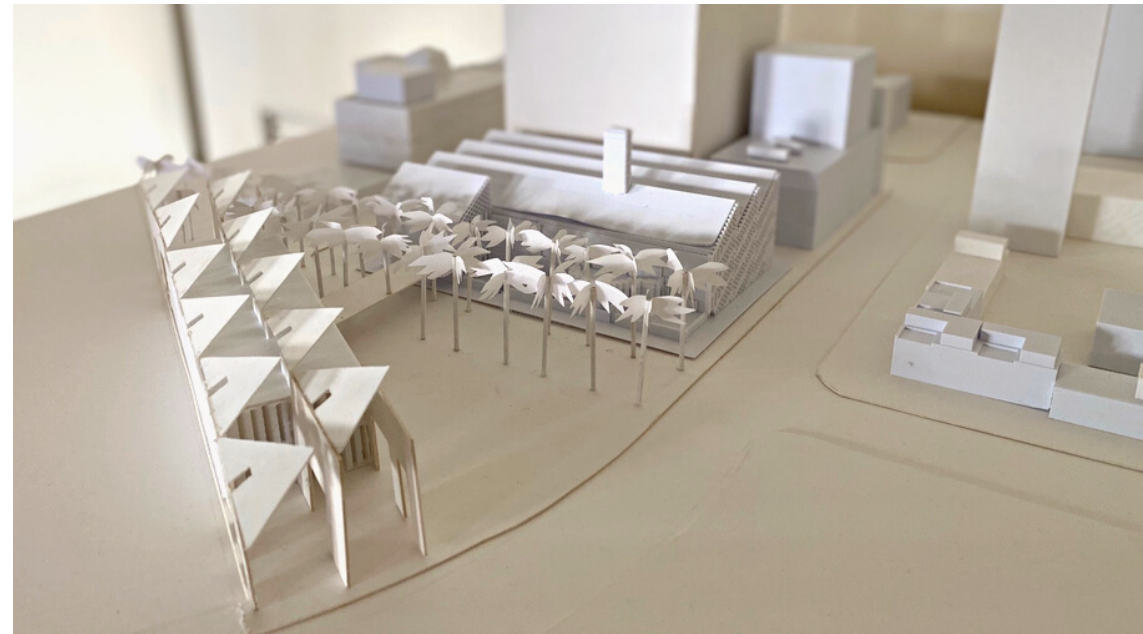
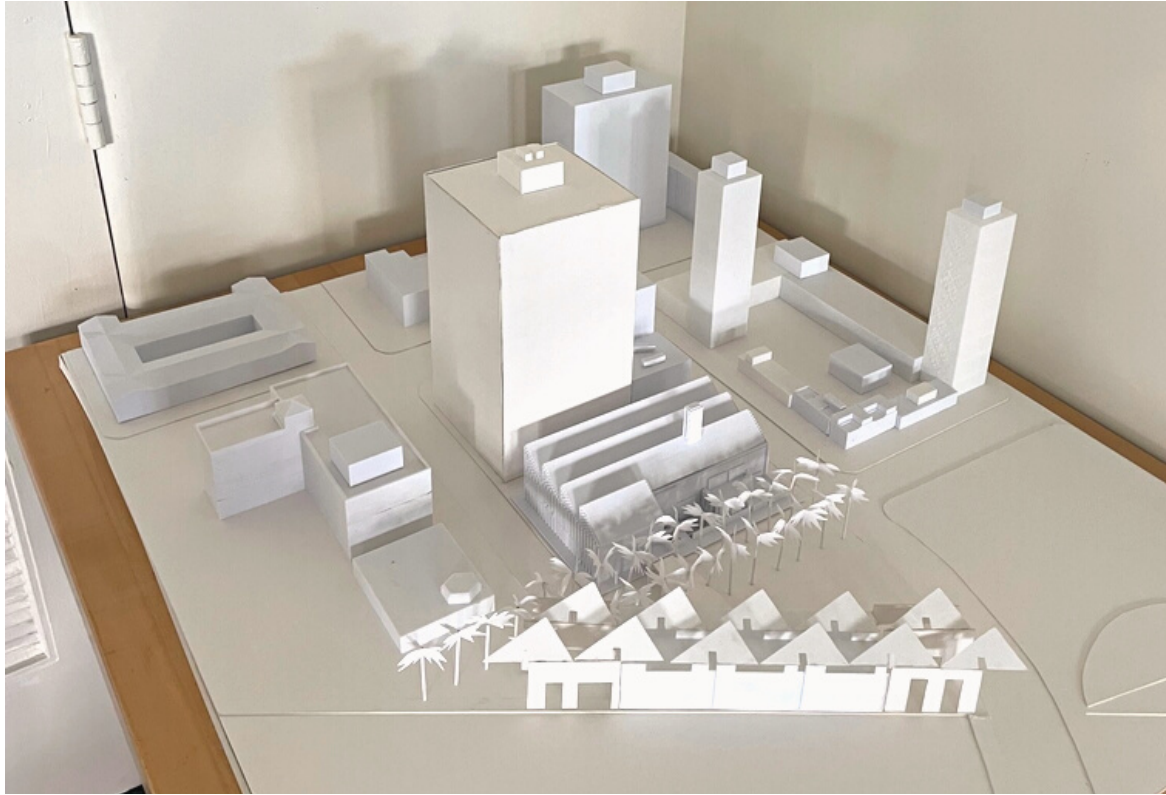
# NEW WING PERSPECTIVES

---



# MODEL

---



# PRESENTATION BOARDS

## THE NEW CHILDREN'S MUSEUM

VISIONARY PLAN

OFFICE RELOCATION  
AND FUTURE EXPANSION

Led by: James Brown

Student Participants: Alejandra Banuelos,  
Cherilyn Rodriguez, Elizabeth Dyball,  
Erick Nguyen, Favkann Yam, Jallene Salas,  
Kassandra Keys, Lily Marino

SITE PLAN



ART 545  
DESIGN STUDIO

ART 545 is an upper-division course for interior architecture students to gain experience doing real projects both on and off campus.

NEW CHILDREN'S MUSEUM  
VISIONARY PLAN

For this project we worked with The New Children's Museum, located in Downtown San Diego, to help meet their design needs. First, we will effectively relocate their office space and convert it into gallery space. We also propose a design for the museum expansion.



THIRD FLOOR / ROOF PLAN



SECOND FLOOR PLAN



FIRST FLOOR PLAN



BASEMENT FLOOR PLAN



NEW WING



THE ROWS



BOARD ROOM



NEW OFFICE







# THANK YOU!

---

